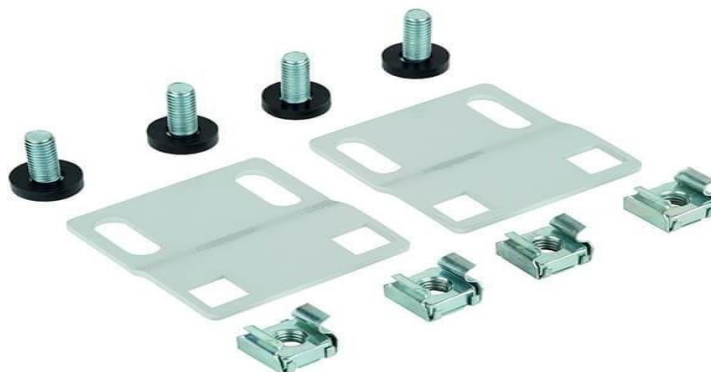


## RED series

Regulators used for 21" beams for mounting switches or devices in cabinets.



Mounting regulators series RED

### features :

- designed for mounting 19" cases in racks with 21" beam spacing
- allow the device to be mounted without having to replace the holders
- can be installed in beams with standard or ETSI spacing
- versions for 1U, 2U, 3U, 6U high cases
- convenient installation into 19" cases using cage nuts.

### in the set :

- mounting screws
- cage nut kit

### standards and certificates :

- ITU-T L.202 (07/10)
- 2001/95/WE directive

### sectors :



### technical specifications :

RED series	
usable height [U]	1, 2, 3, 6
weight [kg]	0,2
color	powder-coated steel, color RAL 7035

## RED series

### ordering:

0	1	description
RED-21-		regulator for cabinet applications with 21" beam spacing
	1U	height 1U, standard opening
	2U	height 2U, standard opening
	3U	height 3U, standard opening
	6U	height 6U, standard opening
	1U/E	height 1U, ETSI type opening
	2U/E	height 2U, ETSI type opening
	3U/E	height 3U, ETSI type opening
	6U/E	height 6U, ETSI type opening

### example :

RED-21-2U/E – 2U high regulator used in cabinets with 21" beam spacing and ETSI type opening.