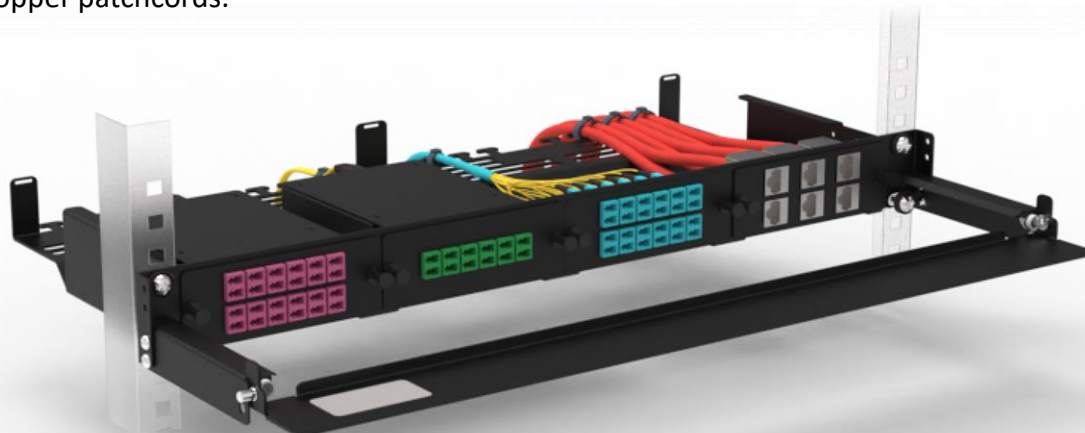


HEL-HC-1U-4M

Modular cross-transition hybrid chassis that enables easy and quick patching in replaceable modules of fiber optic or copper patchcords.



Visualization of hybrid chassis with modules and cover

features:

- product designed for installation in 19" and 21" cabinets and racks (with reducers),
- hybrid chassis enables connection and commutation of fiber optic and copper patchcords in 4 modules (ordered separately),
- possibility of connection up to 96 optical fibers (4 modules with LC duplex adapters),
- mounting brackets with a simple assembly function
- snap-on module assembly system for easy installation and replacement,
- self-adhesive descriptive label that allows to mark relations,
- perforated holes and handles at the back for better organizing patchcords with cable ties.

included:

- mounting kit,
- velcro tape (1 meter),
- cable ties (8 pcs.).

options ordered separately:

- patch or transition switching modules,
- reducers e.g. RED-21-1U-E,
- front cover HEL-HC-COVER,
- top cover HEL-HC-TOP-COVER,
- blind for empty slots HEL-HC-TOP-COVER.

standards and certificates:

- flammability class V0 acc. UL 94
- PN-EN 60529:2003
- PN-EN 50102:2001
- ITU-T L.202:2010

sectors:



TELECOMMUNICATION
AND MOBILE
OPERATORS



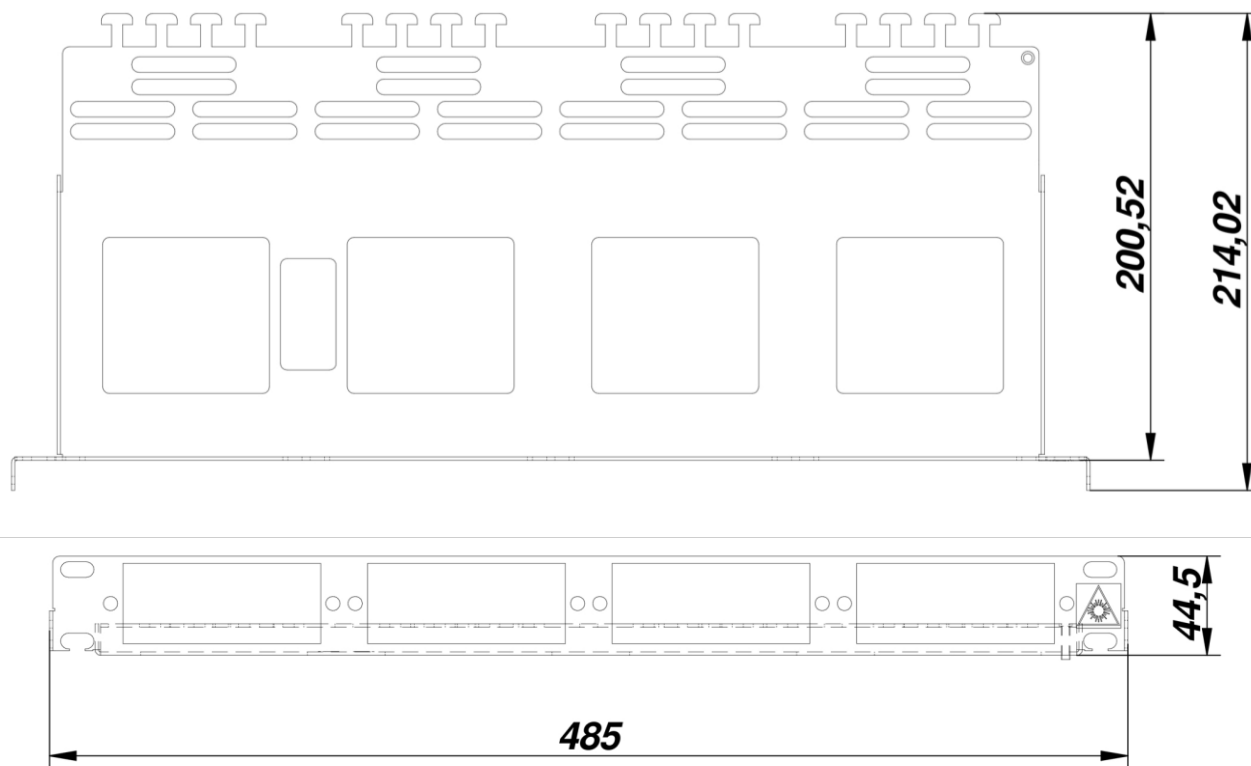
ISP AND CATV
OPERATORS



DESIGN AND
EXECUTION
COMPANIES

HEL-HC-1U-4M

technical drawing:



technical specifications:

HEL-HC-1U-4M	
dimensions [width x height x length][mm]	485 x 44,5 x 214
rack height [U]	1
number of slots [pcs]	4
material	powder painted steel
color	black RAL9005 or grey RAL7035
weight [kg]*	1,5

* weight without additional equipment

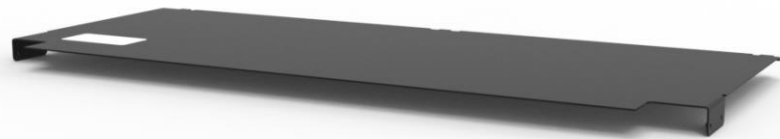
HEL-HC-1U-4M

chassis configuration:

code	description
HEL-HC-1U-4M-BK	HELIOS, empty modular cross-transition hybrid chassis, 1U high, 4 fiber optic / copper modules slots. Capacity up to 96J using LC duplex adapters. Construction: 485x44,5x214 [mm], powder painted steel, color RAL9005.
HEL-HC-1U-4M-GY	HELIOS, empty modular cross-transition hybrid chassis, 1U high, 4 fiber optic / copper modules slots. Capacity up to 96J using LC duplex adapters. Construction: 485x44,5x214 [mm], powder painted steel, color RAL7035.



Visualization of front covers



Visualization of top cover

accessories:

code	description
HEL-HC-COVER-BK	HELIOS, hybrid chassis, front cover, depth 7cm, black
HEL-HC-COVER-GY	HELIOS, hybrid chassis, front cover, depth 7cm, gray
HEL-HC-COVER-L-BK	HELIOS, hybrid chassis, front cover, depth 10cm, black
HEL-HC-COVER-L-GY	HELIOS, hybrid chassis, front cover, depth 10cm, gray
HEL-HC-BLIND-BK	HELIOS, hybrid chassis, blind module, black
HEL-HC-BLIND-GY	HELIOS, hybrid chassis, blind module, gray
HEL-HC-TOP-COVER-BK	HELIOS, hybrid chassis, top cover, black
HEL-HC-TOP-COVER-GY	HELIOS, hybrid chassis, top cover, gray