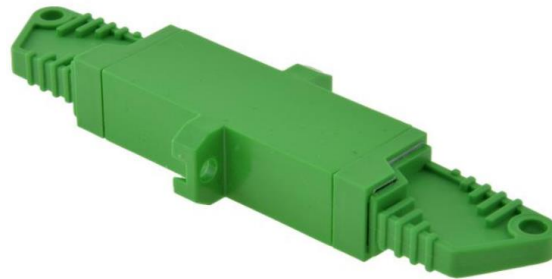


## A-E2A-SM-SX-HS

Fibre optic adapter is used to connect fibre optic connectors of a given type with each other. It is used inter alia in distribution boxes.



Adapter A-E2A-SM-SX-HS

### features:

- screws mounting,
- with flange,
- built-in mechanical protection,
- ceramic centering sleeve,
- singlemode, green coloured.

### standards and certificates:

- IEC 61754-15
- TIA 604-16
- UL 94-VO
- RoHS

### sectors:



### technical specifications:

Adapter E2000/APC SIMPLEX	
dimension (width x height x depth) [mm]	9 x 13 x 42
weight [g]	3

### ordering:

0	discription
A-E2A-SM-SX-HS	E2A/APC adapter, SM, simplex, green colour